

THORN
LIGHTING



CESAR BOW

Elegance with ease



**WE
MAKE
LIGHT
WORK**

ELEGANCE WITH EASE

A surface-mounted, non-walkover LED uplight, Cesar Bow provides high-performance illumination without the need for recessing or drainage. It is ideal for lighting architecture and greenery, providing a grazing light for bushes, trees and vertical surfaces such as walls or columns. The thin profile of its housing creates the illusion of a recessed luminaire, and, with no visible screws, Cesar Bow has a sleek, streamlined aesthetic.

As the fixture does not require recessing, it can be installed quickly and easily. A special nylon fixing plate protects the luminaire from the ground, whilst also simplifying maintenance and installation.

Available in two sizes, four colour finishes, four light distribution options and with remote DALI-2 controls, Cesar Bow provides excellent flexibility with convenient installation.



CESAR BOW

FEATURES

SHAPE AND SIZES

Cesar Bow is a round, surface-mounted luminaire available in two sizes: small or medium.

Small: 200 mm diameter x 29 mm height

Medium: 260 mm diameter x 31 mm height

LIGHT QUALITY

CRI 90

VISUAL COMFORT

A combination of the latest generation of LEDs and bespoke lenses ensure comfort and visual interest all at once.

CONTROLLABILITY

DALI-2 controls with remote driver.

DURABILITY

Cesar Bow is rated IK07 (small size)/IK09 (medium size) and IP65/IP67.

Corrosion class C3.

HOUSING COLOUR

Available in White (R9016), Black (R9005), Light Grey (R9006) and Anthracite Grey (G900S)

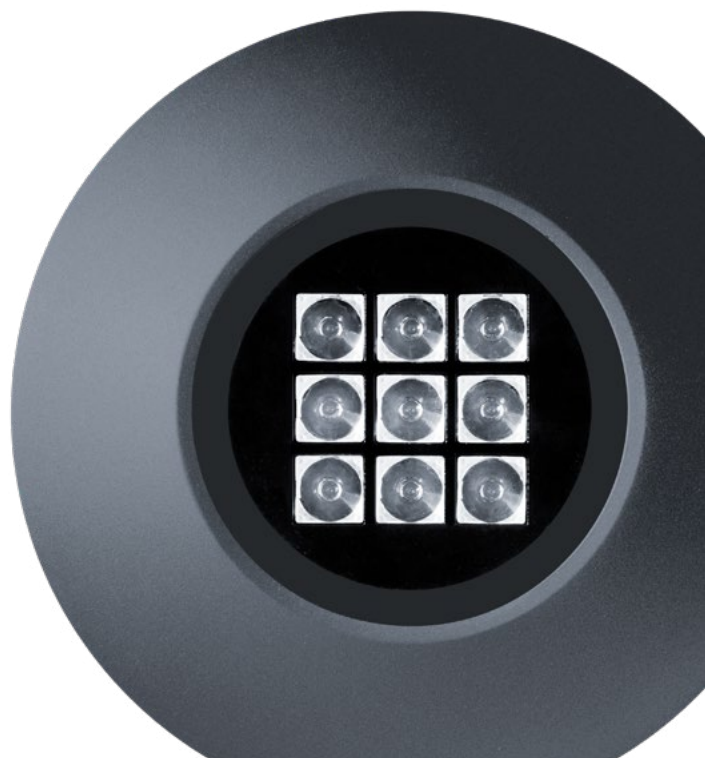
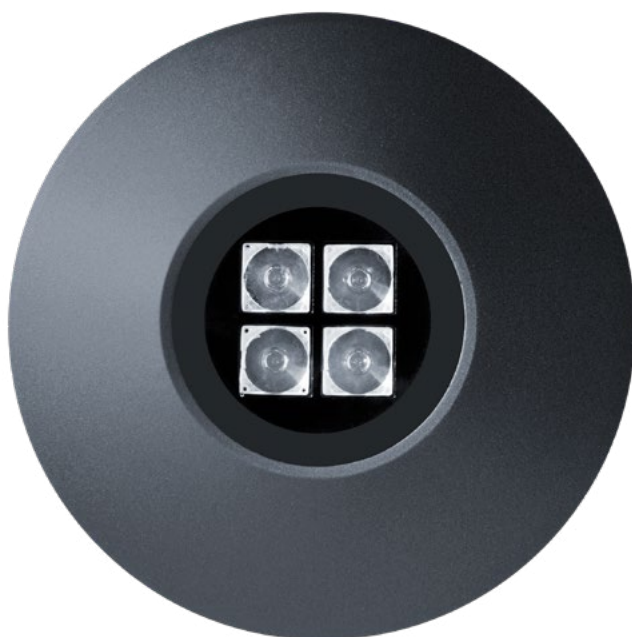
WIRING

Supplied pre-wired with 5m cable.

TECHNICAL DESCRIPTION

Die-cast aluminium housing with high corrosion resistance. Toughened glass 6 mm thick (small) / 8 mm thick (medium). Clear polycarbonate lenses. Stainless steel fixing clips with insulating treatment against galvanic corrosion. Insulating nylon fixing plate for direct ground surface mount. Double powder paint process for superb fixture finish. 3 SDCM. Electrical class III. Risk Class RG1. Operating ambient temperature -20 °C to 40 °C. Lifetime 70,000 hrs L80 B10 25 °C.

CERTIFICATION



ACCESSORIES



ORDERING CODE: 96801659
CESAR BOW S/M GROUND SPIKE

ORDERING CODE: 96700028

(GB IP67 20 W 230 V 250-700 CL2 HFX)

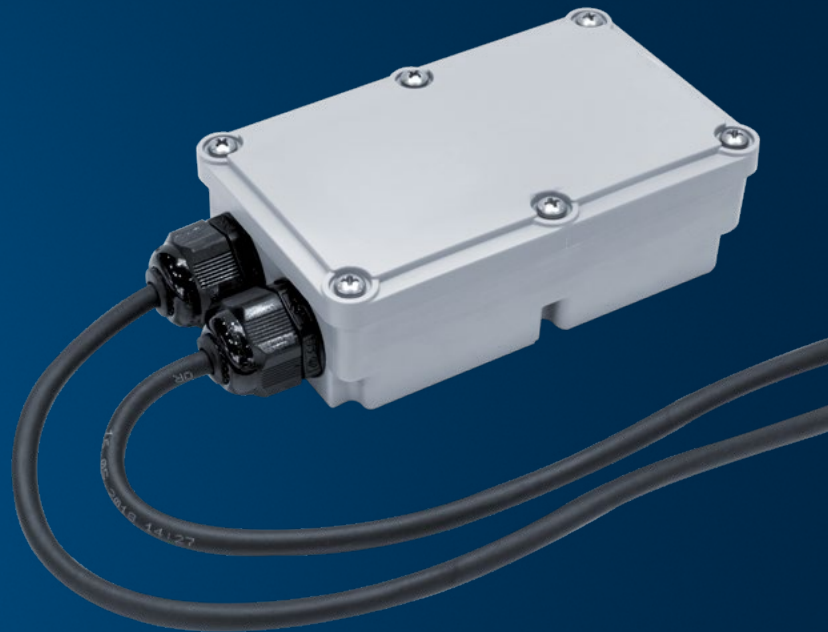
POWER SUPPLY 230 V / 250 mA – 700 mA,
DALI DIMMABLE IN BOX.

IP67, 20 W, Class II.

Dimensions: 175.5 mm x 86.5 mm x 43 mm.

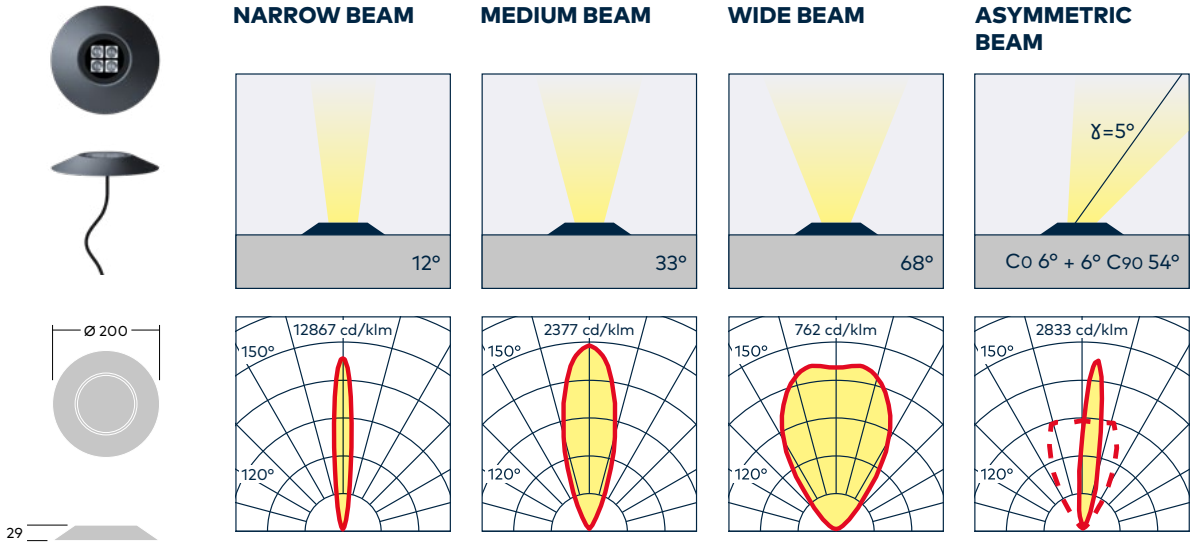
Will operate up to 2 small luminaires or
1 medium luminaire.

Maximum distance between luminaire and power supply
10 m. Operating Ambient Temperature –20 °C to 50 °C.
Built-in surge protection (kV) L/N-PE: 2 kV.

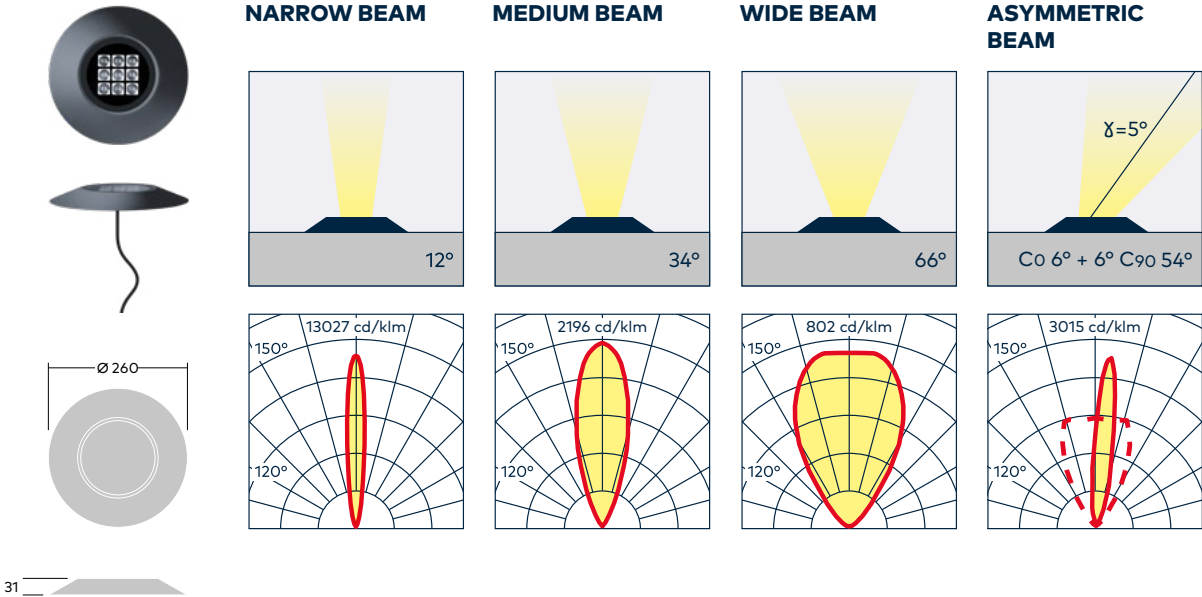


CESAR BOW

SMALL



MEDIUM



PHOTOMETRIC SUMMARY

Size	Colour temp	Beam angle	Lumen output (lm)	Power (W)	Rated input power (W)	Luminaire efficacy (lm/W)
Small	927 (2700 K)	12° (Narrow Beam)	723	8.1	8.2	88.17
	930 (3000 K)		789			96.22
	940 (4000 K)		855			104.27
	927 (2700 K)	33° (Medium Beam)	694			84.63
	930 (3000 K)		757			92.32
	940 (4000 K)		820			100
	927 (2700 K)	68° (Wide Beam)	661			80.61
	930 (3000 K)		721			87.93
	940 (4000 K)		781			95.24
	927 (2700 K)	Asymmetric	658			80.24
	930 (3000 K)		718			87.56
	940 (4000 K)		778			94.88
Medium	927 (2700 K)	12° (Narrow Beam)	1598	18.1	18.3	87.32
	930 (3000 K)		1740			95.08
	940 (4000 K)		1888			103.17
	927 (2700 K)	34° (Medium Beam)	1536			83.93
	930 (3000 K)		1676			91.58
	940 (4000 K)		1816			99.23
	927 (2700 K)	66° (Wide Beam)	1529			83.55
	930 (3000 K)		1668			91.15
	940 (4000 K)		1808			98.80
	927 (2700 K)	Asymmetric	1473			80.49
	930 (3000 K)		1606			87.76
	940 (4000 K)		1741			95.14

BUILD YOUR PRODUCT

CESAR BOW

Product	Size (Shape)	LED	Colour temp	Beam angle	Control	Body colour
Cesar Bow	200 (Dia) x 29 (H)	S 4 LEDs 4L	CRI 90 2700 K 927	Narrow Beam NB	Remote DALI-2* RD	White WH
	260 (Dia) x 31 (H)	M 9 LEDs 9L	CRI 90 3000 K 930	Medium Beam MB		Black BK
			CRI 90 4000 K 940	Wide Beam WB		Light Grey GY
				Asymmetric AS		Anthracite Grey ANT

EXAMPLE PRODUCT DESCRIPTION

Cesar Bow	S	4L	930	NB	RD	ANT
-----------	----------	-----------	------------	-----------	-----------	------------

* Note: Remote driver must be ordered separately. Visit the website for more information.



5 YEAR
GUARANTEE

As a globally leading luminaire manufacturer, Thorn Lighting provides a five-year warranty for its complete product range within all European Countries.
thornlighting.com/guarantee

Thorn Lighting is constantly developing and improving its products. All descriptions, illustrations, drawings and specifications in this publication present only general particulars and shall not form part of any contract. The right is reserved to change specifications without prior notification or public announcement. All goods supplied by the company are supplied subject to the company's General Conditions of Sale, a copy of which is available on request. All measurements are in millimetres and weights in kilograms unless otherwise stated.
01/2026 (INT)

**WE
MAKE
LIGHT
WORK**