

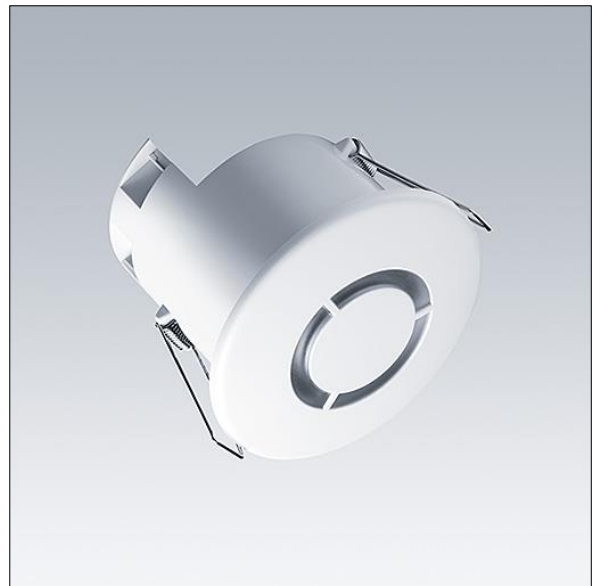
Connect Distribution Units

96239818 CONNECT MRE DUC MW

THORN

Connect Distribution Units

The CONNECT MRE DUC MWMR microwave presence detector switches are designed to provide automatic control of lighting loads via the Connect marshalling box. The CONNECT MRE DUC MWMR detects movement using a highly sensitive microwave detector and turn the load on. When an area is no longer occupied the load will switch off after an adjustable time out period. This microwave works by emitting low power microwave signals and measuring the reflections as the signals bounce off moving objects.



TLG_SNLI_F_SLDMMRPDB.jpg