

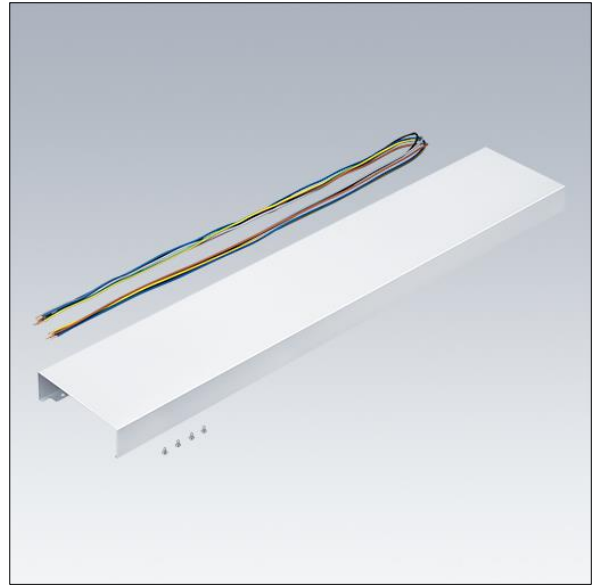
## Punch

### 96635744 PUNCH 3 LV INFILL L9

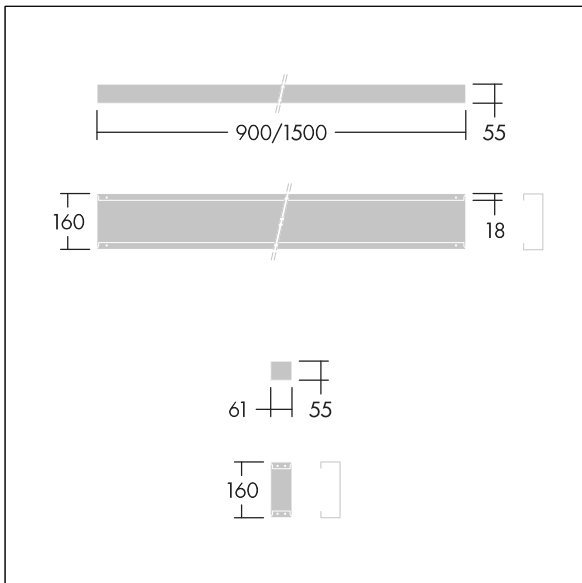
#### Punch

Infill panel for Punch LV continuous run installations. Body: sheet steel powder coated white (close to RAL9016). For electrical through wiring, additional cable for luminaire needed.

Weight: 1.85 kg



TLG\_PNCH\_F\_Infill\_1700.jpg



TLG\_PNC3\_M\_LV\_RESD\_INFIL.wmf