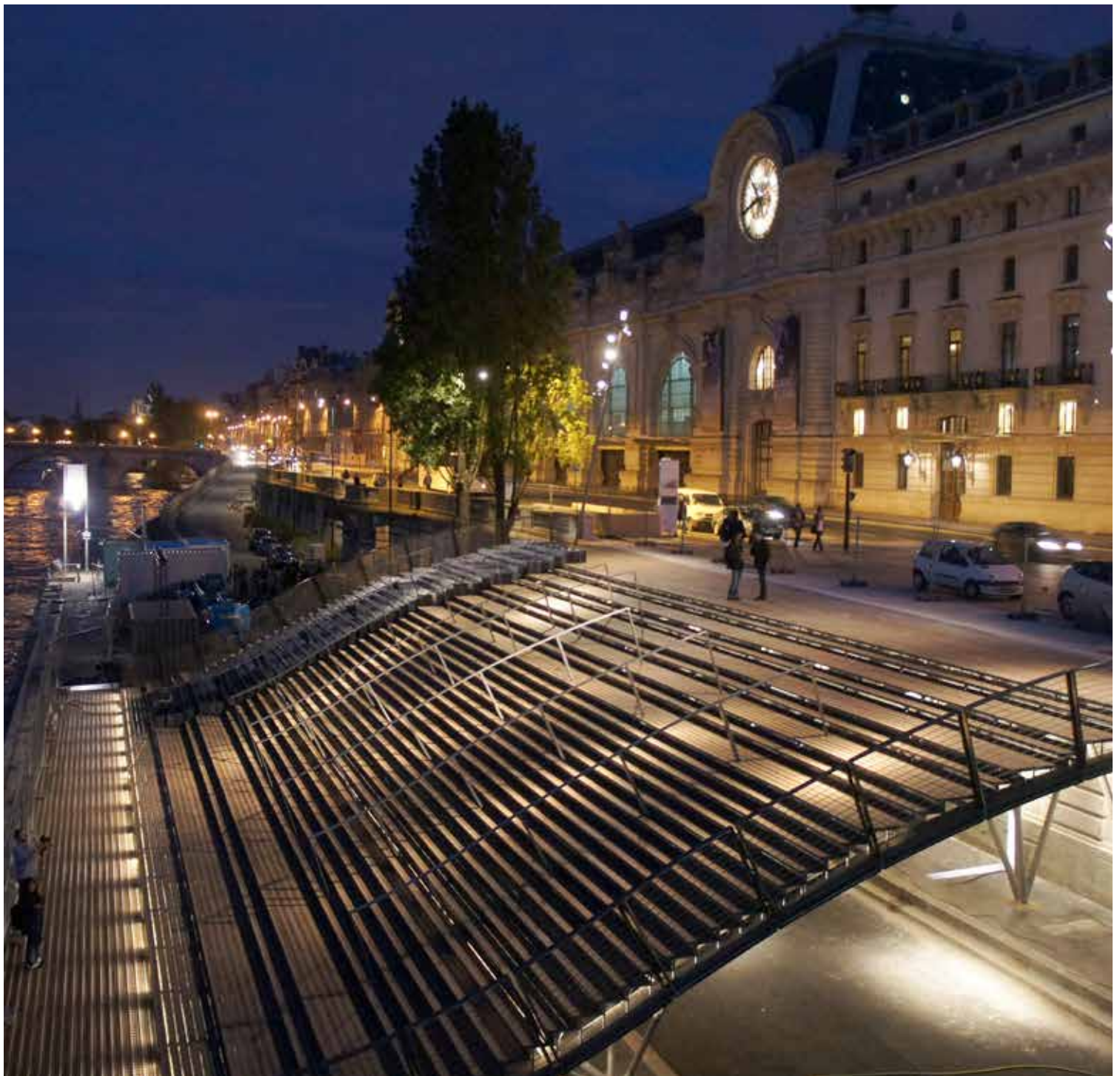


THORN

LIGHTING PEOPLE

Case Study

The expressway public staircase, Paris, France



Offering magnificent historical views including those of the Eiffel Tower, Louvre and Place de la Concorde, the banks of the Seine river are a UNESCO World Heritage Site.

The expressway is a staircase which is situated on the Seine riverbank, descending from the Quai Anatole France and the Musée d'Orsay down to the river. It can accommodate more than 600 people at any one time and is conveniently located for visitors and locals alike to pause, rest and enjoy the wonderful view of Paris.

Product used



Satin 2

Key facts

- Intensive and extensive light distributions achieve the desired lighting effect
- Two modes of operation for everyday and event lighting
- Compliant with both current and currently defined ERP requirements for longevity





Thorn's Satin 2 floodlight was chosen to illuminate the 30m wide expressway, mounted under the steps to reveal the dramatic structure while ensuring pedestrian safety.

For the expressway, a combination of two pre-cabled Satin 2 strips incorporating intensive and extensive light distributions with a 3200K colour temperature were used. Compact, discreet and linear, Satin 2 subtly blends into the architecture while its efficient LEDs ensure low energy consumption as well as instant start and scene setting, with no warm up or adjustment time.

The new lighting scheme benefits from two operation modes: basic and event. The basic mode is for everyday lighting and has a good transition between the road (20 lux) and platform (10 lux) to prevent pedestrians' vision having to adjust while walking down steps. Similarly, it also prevents dazzle or distraction to drivers. The street lighting and step lighting have the same on/off controller to harmonise switching and reduce the number of controls to maintain.

Offering a greater level of control and flexibility the event mode is controlled manually. Importantly, Satin 2 is compliant with ERP requirements both with current and currently defined future requirements for longevity.

From Thorn's 15 ways to save energy, the following are key to minimising energy consumption at the Seine expressway:



Luminaire distribution

The choice of light distributions offered by Satin 2 allows the desired lighting effect to be created while maximising useful light and without creating nuisances.



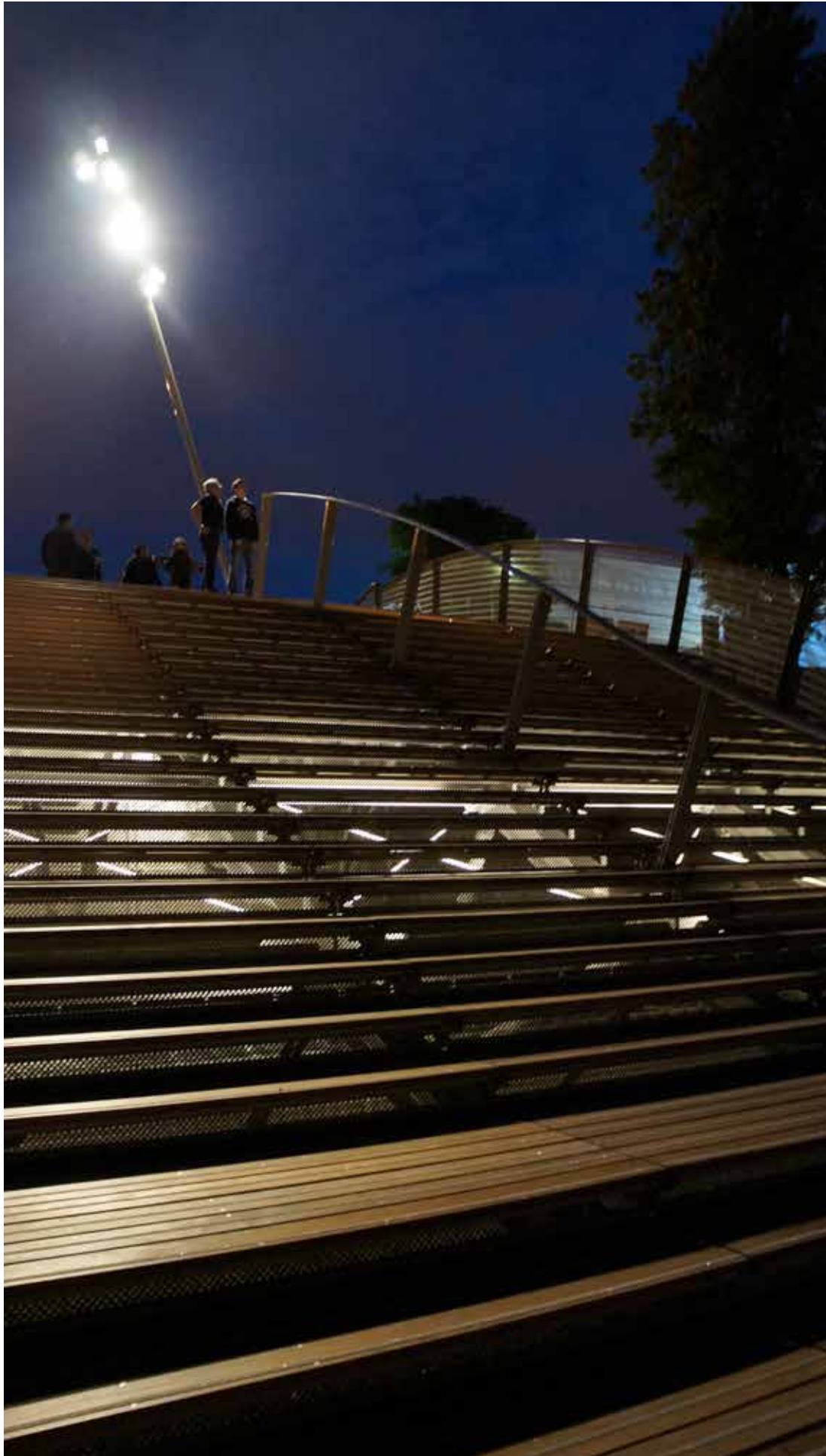
Lamp efficacy

Lamp efficacy is important because the amount of light emitted from a lamp (in lumens) compared to the amount of power used by the lamp to produce it (in Watts) is key for energy efficiency. Satin 2 has a high lamp efficacy.



Task/scene setting

The use of dimmable luminaires in conjunction with scene setting controls allows the correct lighting levels to be set for the task in hand, ensuring energy is used efficiently.



www.thornlighting.com

Thorn Lighting is constantly developing and improving its products. All descriptions, illustrations, drawings and specifications in this publication present only general particulars and shall not form part of any contract. The right is reserved to change specifications without prior notification or public announcement. All goods supplied by the company are supplied subject to the company's General Conditions of Sale, a copy of which is available on request. All measurements are in millimetres and weights in kilograms unless otherwise stated. Printed on Luxo Light.

Publication Date: 07/14